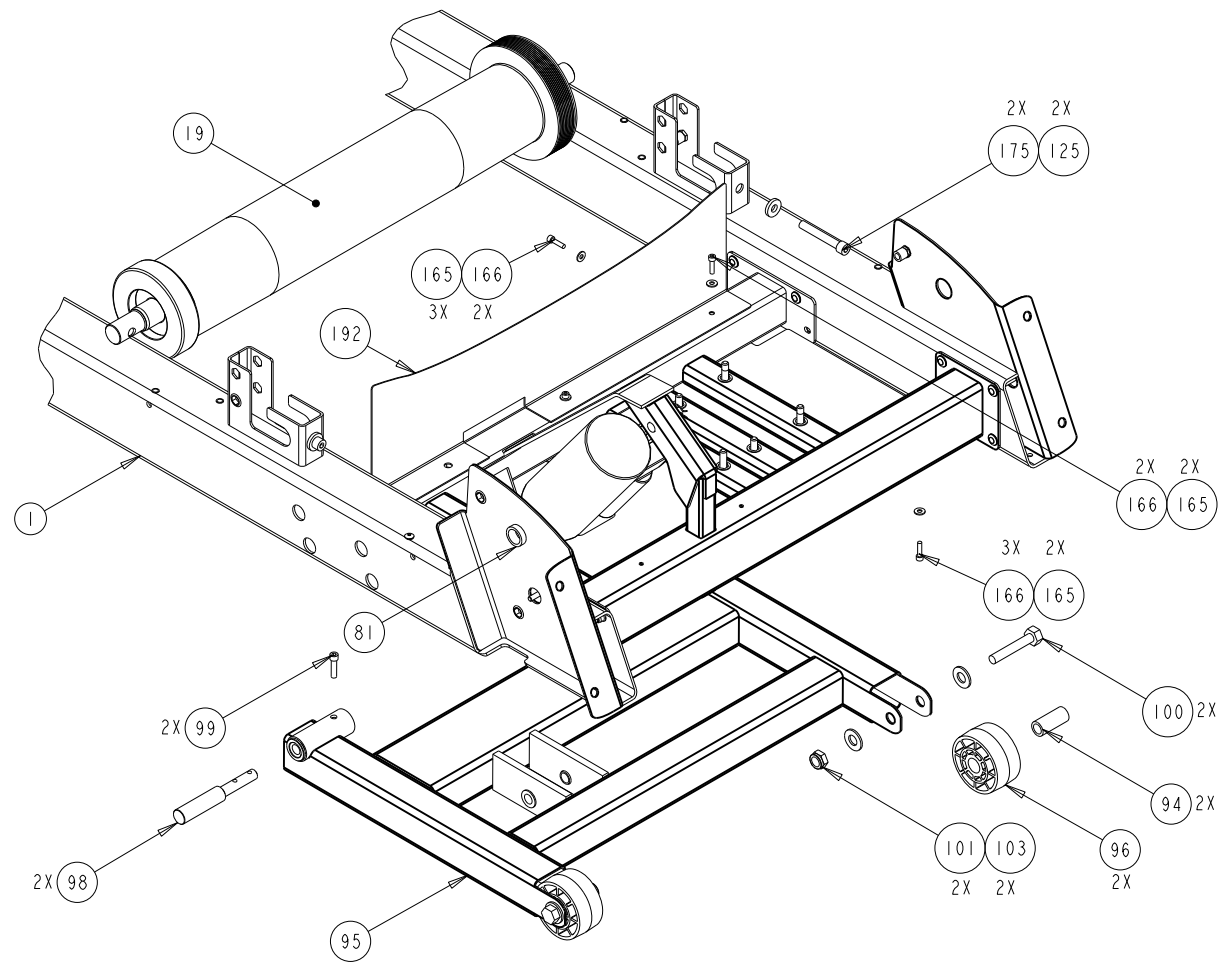
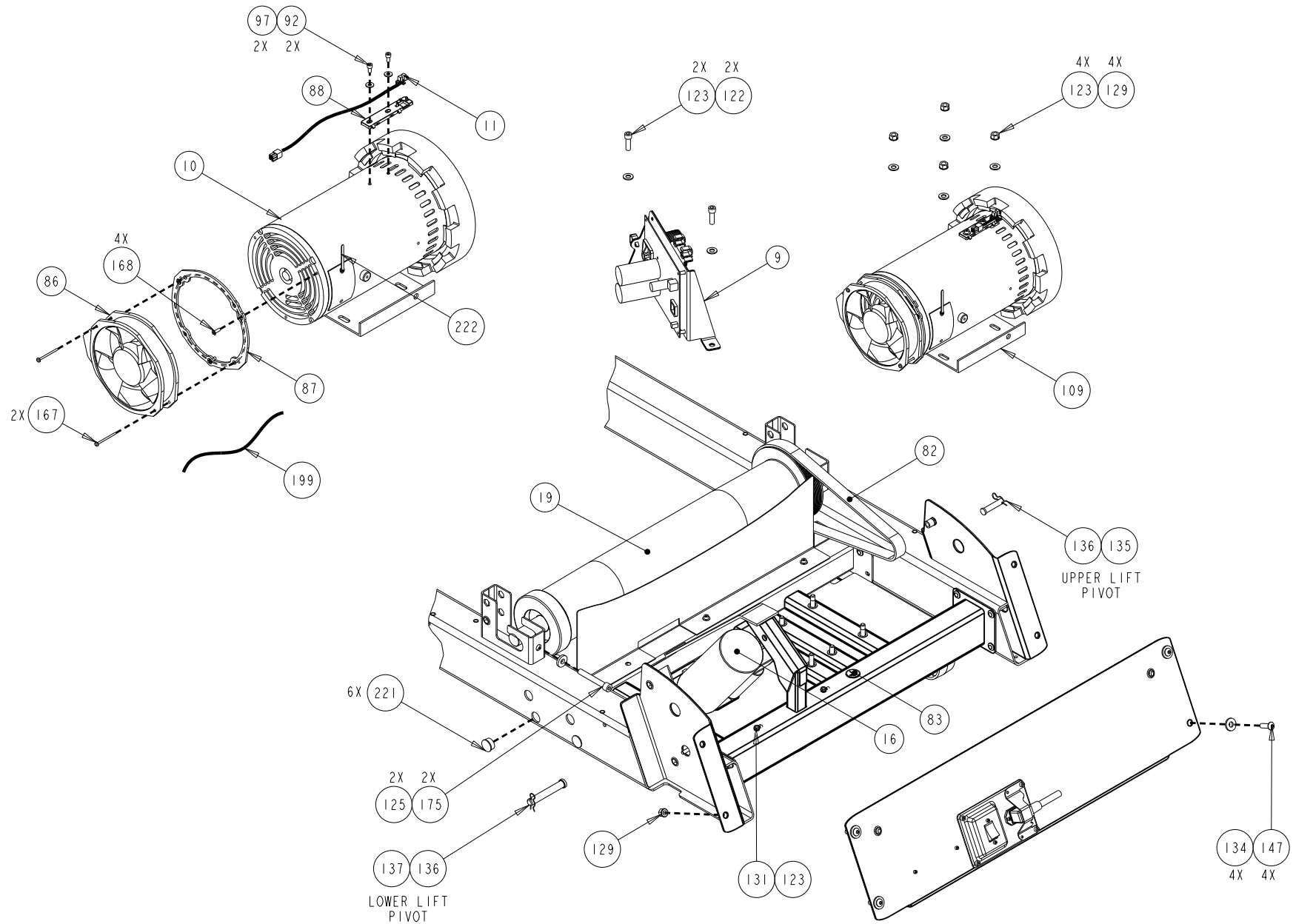


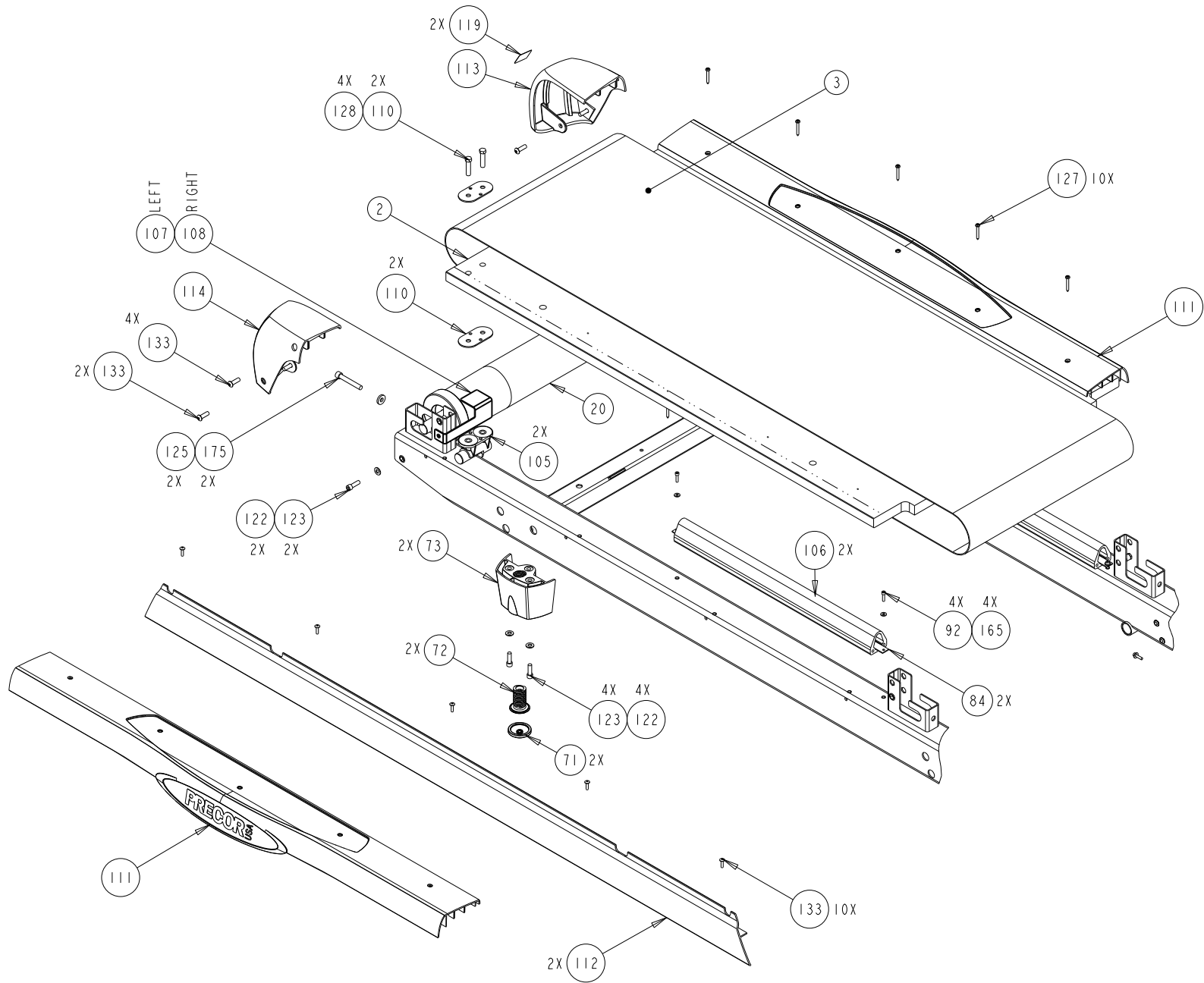
C966i NH	P/N: 48576-101	REV: B02
DRAWN BY: C THOMSON	DATE: 03 DEC 2009	SHEET 1 OF 7



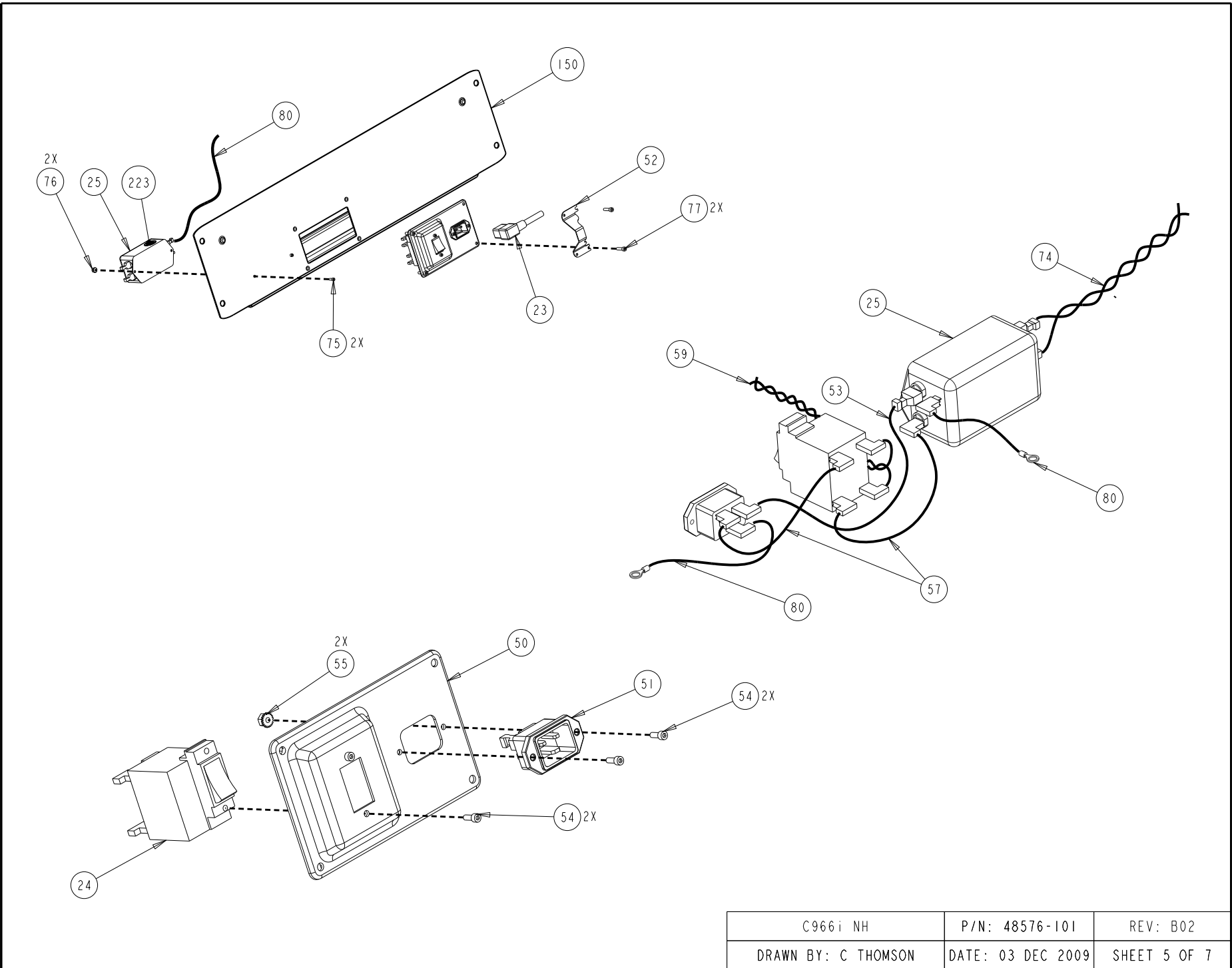
C966i NH	P/N: 48576-101	REV: B02
DRAWN BY: C THOMSON	DATE: 03 DEC 2009	SHEET 2 OF 7



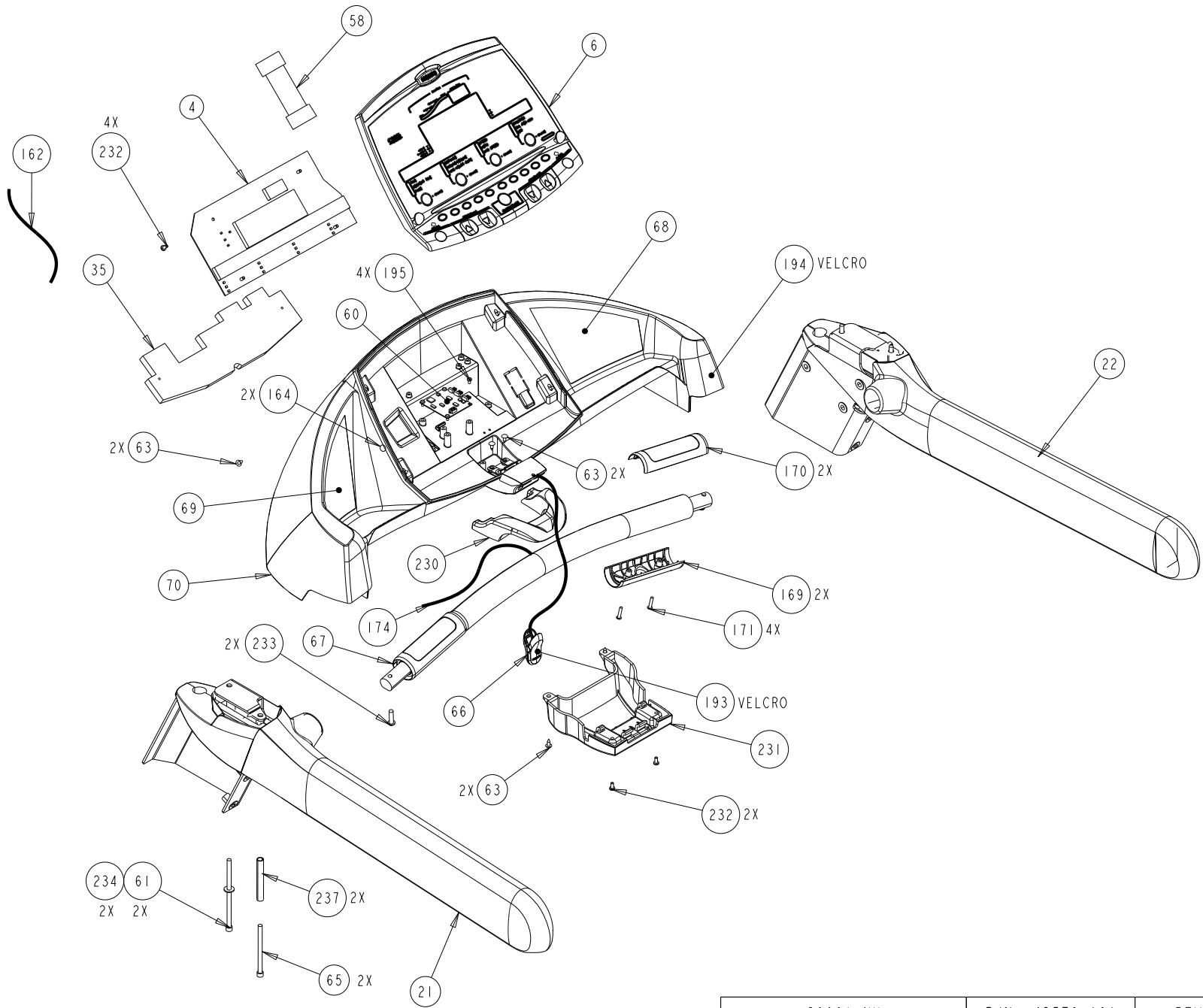
C966i NH	P/N: 48576-101	REV: B02
DRAWN BY: C THOMSON	DATE: 03 DEC 2009	SHEET 3 OF 7



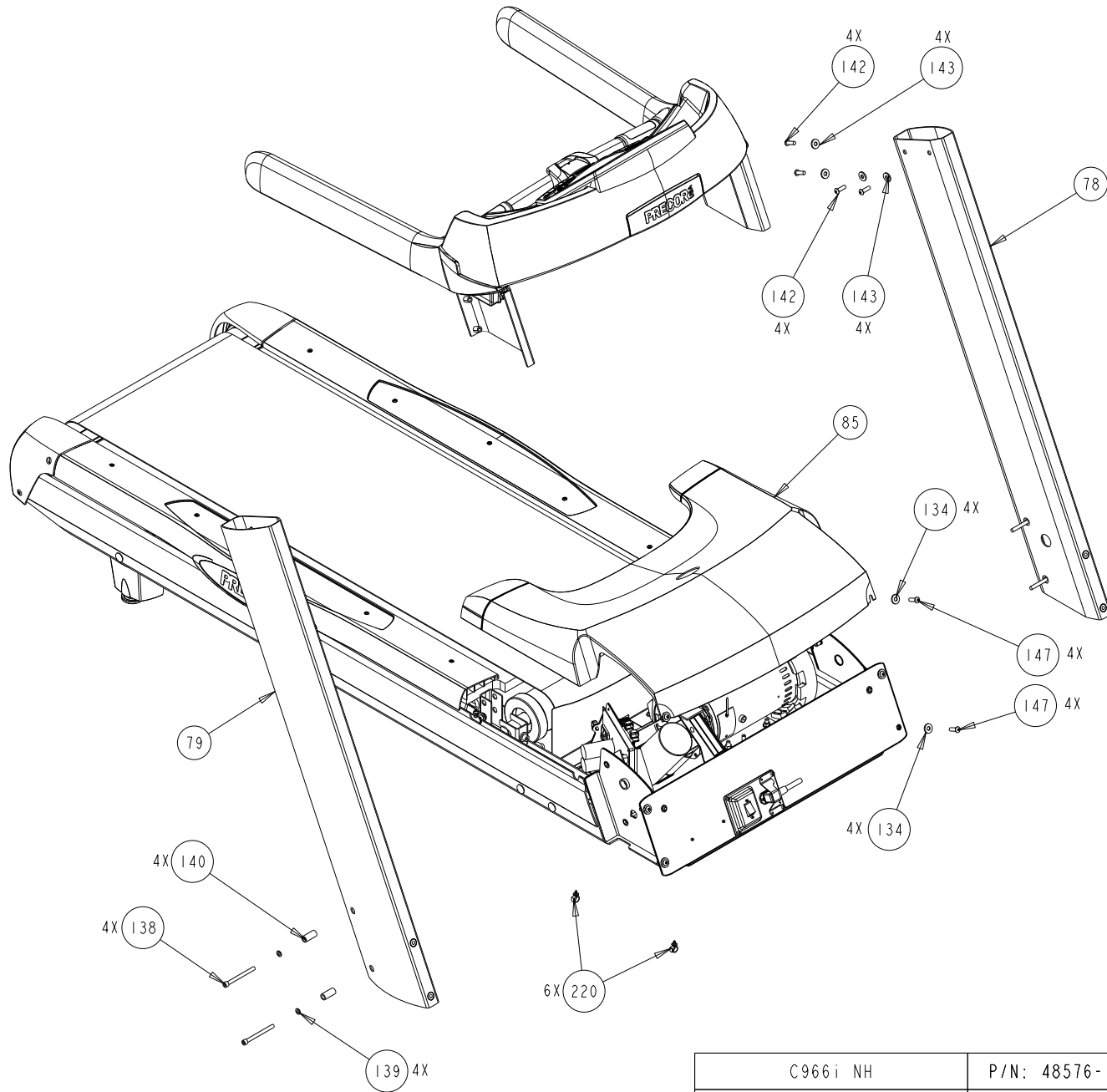
C966i NH	P/N: 48576-101	REV: B02
DRAWN BY: C THOMSON	DATE: 03 DEC 2009	SHEET 4 OF 7



C966i NH	P/N: 48576-101	REV: B02
DRAWN BY: C THOMSON	DATE: 03 DEC 2009	SHEET 5 OF 7



C966i NH	P/N: 48576-101	REV: B02
DRAWN BY: C THOMSON	DATE: 03 DEC 2009	SHEET 6 OF 7



C966i NH	P/N: 48576-101	REV: B02
DRAWN BY: C THOMSON	DATE: 03 DEC 2009	SHEET 7 OF 7

C956i (120VAC)(serial code AA63, AEWV, AGJW)

Part Number	Description	Bubble Number
	59085102 DECK W/ INSERTS ASSY WITH SHIPPER	2
	36355138 RUNNING BELT, SIEGLING 132.75 X 20	3
	45435406 PCA,DISPLAY,T2	4
	47397111 ASSEMBLY,DISPLAY,LABEL,EN,C956I,LAR	6
	44905084 ASSY,CBL,MOD,8P8C,1-1,SILVER,84"	7
	45749105 ASSY, LOWER ELECTRONICS, C95X-ND,T3	9
	59070107 KIT, ASSY, DRIVE MOTOR, C95XI, SGR,	10
	20108101 ASSY, SPEED SENSOR, CHI-HUA MOTOR	11
	59088101 KIT, LIFT MOTOR, 120V, W/ADAPTER CA	16
	44214104 ASSEMBLY, DRIVE ROLLER	19
	44212104 ASSEMBLY, TAKE-UP ROLLER	20
	47429144 PWR CORD,125VAC,20A,NEMA 5-20RA45/I	23
	10435101 CKT BRKR,250V,MAGNETIC,ROCKER,	24
	11224102 FILTER,PWR LINE,250VAC,16A	25
	59095101 UPGRADE KIT, LOWER FIRMWARE 3.02V,	27.01
	44411103 TOUCHSENSOR SHIELD,23-KEY,T2/C2/T3/	35
	44275102 MOUNT, CIRCUIT BREAKER, PLASTIC	50
	45381101 IEC 16/20A POWER CORD INLET	51
	45383009 CBL,1C,14AWG,250X032 QD RECP/250X03	53
CCNE013038	SHCS,6-32 X .375,NYLOCK,SSTL	54
KGCN013011	LOCKNUT, STARWASHER 6-32, #6	55
	44528006 ASSY,CBL,1 COND,14AWG,QK DISC,6",BR	57
	45696022 ASSY,CBL,FFC,12COND,28AWG,2.2",AU	58
	43579108 ASSY BOARD, CHR, CONTACT PRIORITY/	60
WNZN026006	WASHER,FLT,1/4X.625X.063,BLK CVS	61
MGCN016038	SCREW,MCH,8-32X3/8,PANHD,PHIL,	63
PGTN016050	SCREW,S/T,#8X1/2,TRS,PHIL,BLK SHARP	63
	44202104 ASSEMBLY, STOP BUTTON	66
	45273023 ASSY, CABLE, FILTER TO TERMINAL BLK	74
CCNE013038	SHCS,6-32 X .375,NYLOCK,SSTL	75
KGCN013011	LOCKNUT, STARWASHER 6-32, #6	76
CAKN019075	SCREW, SKHD,10-24 X 0.75,BLK ZN	77
	44534008 ASSY,CBL,1COND,14AWG,QK DISC,8"	80
	10178107 BUSHING, SNAP	81
	10214104 BELT, DRIVE, 825J10TEM POLY V, TEM,	82
	33984101 LABEL, SAFETY, GROUND SYMBOL	83
	44074105 STRAP, GFX TIE DOWN	84
	36192101 BUSHING, SPANNER	94
	44227103 ASSEMBLY, LIFT,WELDMENT	95
	44270101 WHEEL, LIFT	96
CATN025100	SCREW,SKHD,1/4-20X1,BLK SHARPERIZED	99
HCTN050250	SCREW,HEX,GR 5,1/2-13X2-1/2,BLK SHA	100

KACN050019	LOCKNUT,HALF,1/2-13,ZN	101
44234101	DECK PIVOT	105
44236101	GFX CUSHION	106
44258104	BRIDGE, RIGHT, PAINTED	108
44263101	PLATE, SPACER, DECK	110
47286105	TRIM, DECK, USE CAP SCREWS	111
59086103	ASSY, ENDCAP LEFT, STONE GREY	113
47962101	LABEL, CAUTION, ENDCAP, SLATE GRAY	119
CATN031100	SCREW,SKHD,5/16-18X1,BLK SHARPERIZE	122
WBCN031007	WASHER,FLT,5/16X.688X.065, ZN	123
CATN025150	SCREW, SKHD,1/4-20X1.50,BLK SHARPER	127
HCCN038150	SCREW,HEX,GR 5,3/8-16X1 1/2,ZN	128
KGCN031027	LOCKNUT,STARWASHER,5/16-18,1/2	129
PKCN019050	SCREW,S/T,#10X1/2,WSHHXHD,ZN	130
WAMCN019002	WASHER, LOCK, EXT TOOTH, #10	131
TATN019075	BHCS,10-24 X .75,STL,BLK SHRP	132
WPNN038008	WASHER,FLT,5/16X.875X.104,SS	134
10401106	PIN,CLEVIS, 3/8 X 1.75, ZINC	135
10400103	PIN, HITCH, .093 DIA, ZINC, #203	136
45669107	PIN, LIFT PIVOT, 3.34, MUSHROOM HEA	137
CAKN031350	SHCS,5/16-18 X 3.50,STL,BLK ZN	138
WPNN033005	WASHER,FLT,5/16X.562X..060,SS	139
TCNN031100	SCREW,BTHD,5/16-18X1, SS	142
WPNN038008	WASHER,FLT,5/16X.875X.104,SS	143
TCNN031100	SCREW,BTHD,5/16-18X1, SS	147
49341013	ASSY,CBL,HHR TO DISPLAY,HP/FERRITE	162
CATN019075	SCREW, SKHD,10-24 X 0.75,BLK SHARPE	165
WACN019005	WASHER, FLT, #10X.500X.049,ZN	166
42714102	HHR SENSOR,BOTTOM	169
42713102	HHR SENSOR, TOP	170
TCNN016075	SCREW, BTHD, 8-32X.75,SS	171
WAVCN038015	WASHER, FLAT, 3/8 X .875 X .150	175
12264101	RJ-45 TELEPHONE JACK PLUG	180
10762110	VELCRO,BLACK,HOOK 88,W/ADHESIVE 72,	193
10762109	VELCRO,BLACK,LOOP 1000,W/ADHESIVE 7	194
MGCN013025	SCREW,MCH,6-32X1/4,PANHD,PHIL,	195
44201103	SWITCH MOUNT, M9.5X,C95X	196
45283011	ASSY,CBL,UPPER SAFETY SWITCH,11"	197
12259102	SWITCH,MICRO,PLUNGER,SPNC	198
48573101	HARDWARE KIT, C95X-NH,C966	200
10186102	WRENCH, ALLEN, 1/4	202
10186103	WRENCH, ALLEN, 3/16	203
10186104	WRENCH, ALLEN, 5/16	204
11075020	FUSE,200MA,250VAC,SLO,RAD,UL248-14	205

11075102	FUSE,1.00A,250VAC,SLO,RAD,UL248-14	206
11075105	FUSE,2.00A,250VAC,SLO,RAD,UL248-14	207
12414101	CABLE CLAMP INSERT,SNAP IN	220
59096101	KIT, FAN MOUNTING, 120V	220
37436101	LABEL, CHASIS NEUTRAL	223
MGCN016038	SCREW,MCH,8-32X3/8,PANHD,PHIL,	232
20002113	BRUSH W/ LEAD, CHI HUA 93 SERIES DC	235
12909101	5/16" SCREW EXTRACTOR	243
44465004	CBL,1C,14AWG,250X032 QD RECP(X2),BL	299